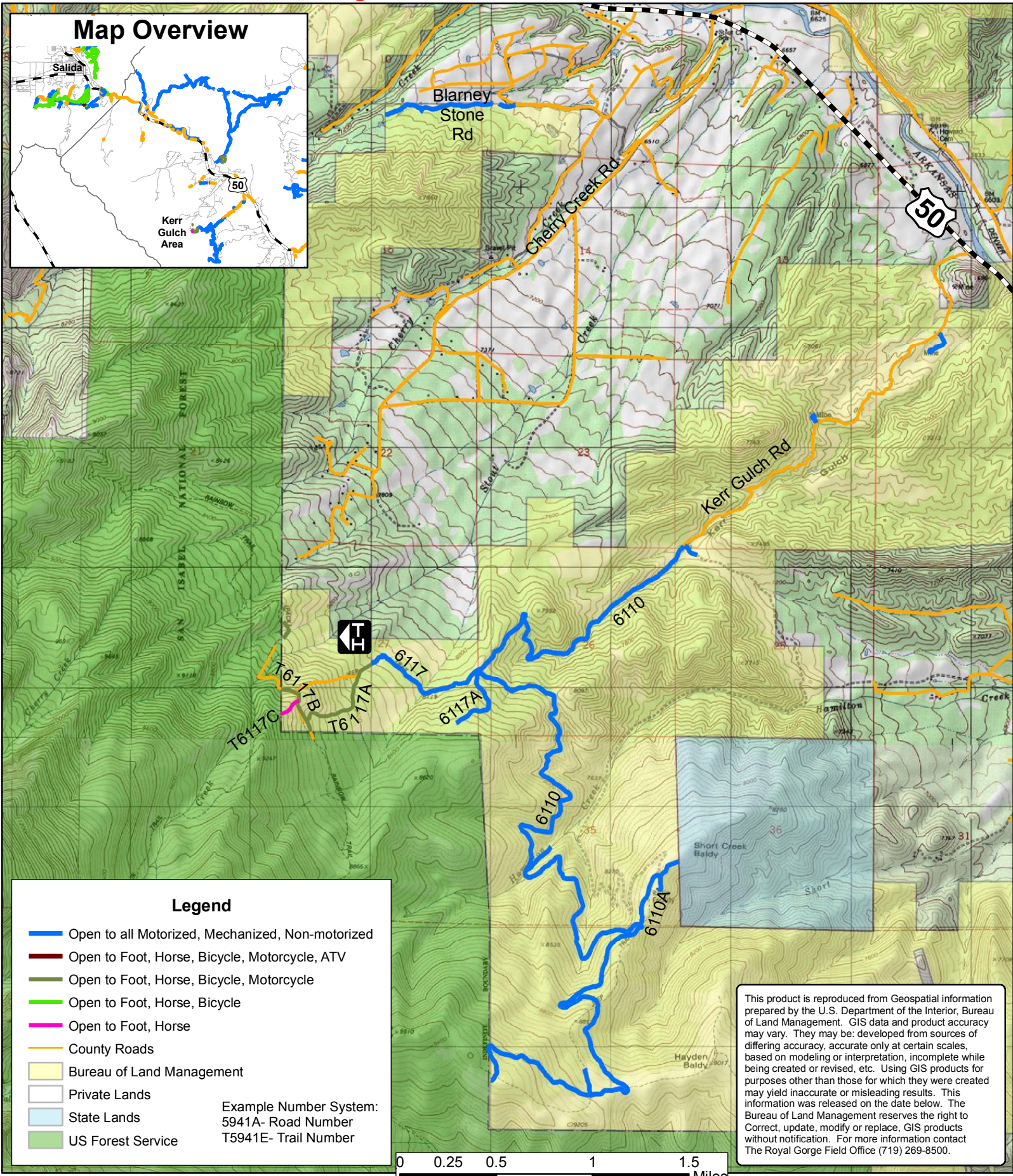
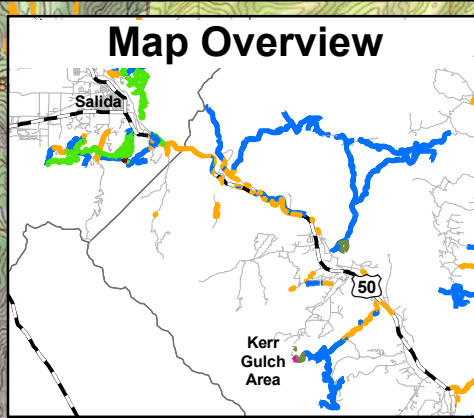




# Kerr Gulch

## BLM Royal Gorge Field Office

### Current Designated Travel Routes as of 1/01/2010



#### Legend

- Open to all Motorized, Mechanized, Non-motorized
  - Open to Foot, Horse, Bicycle, Motorcycle, ATV
  - Open to Foot, Horse, Bicycle, Motorcycle
  - Open to Foot, Horse, Bicycle
  - Open to Foot, Horse
  - County Roads
  - Bureau of Land Management
  - Private Lands
  - State Lands
  - US Forest Service
- Example Number System:  
5941A- Road Number  
T5941E- Trail Number

This product is reproduced from Geospatial information prepared by the U.S. Department of the Interior, Bureau of Land Management. GIS data and product accuracy may vary. They may be: developed from sources of differing accuracy, accurate only at certain scales, based on modeling or interpretation, incomplete while being created or revised, etc. Using GIS products for purposes other than those for which they were created may yield inaccurate or misleading results. This information was released on the date below. The Bureau of Land Management reserves the right to Correct, update, modify or replace, GIS products without notification. For more information contact The Royal Gorge Field Office (719) 269-8500.

