

Welcome to the Oil Well Flats Trail System

Bicycles and Vehicles Please Travel only
on Designated Roads and Trails

Camp only in Existing Sites

Pack Out Your Trash

Enjoy Your Visit!

Shelf Road to
Cripple Creek

Marsh Quarry
Paleontological
Interpretive Site

Path of Least Resistance
.3 mi.

Tectonic Shift
1 mi.

Fracture
1.6 mi.

Fracture
.2 mi.

Tectonic Shift
.8 mi.

Tectonic Shift
.5 mi.

Unconformity
2.3 mi.

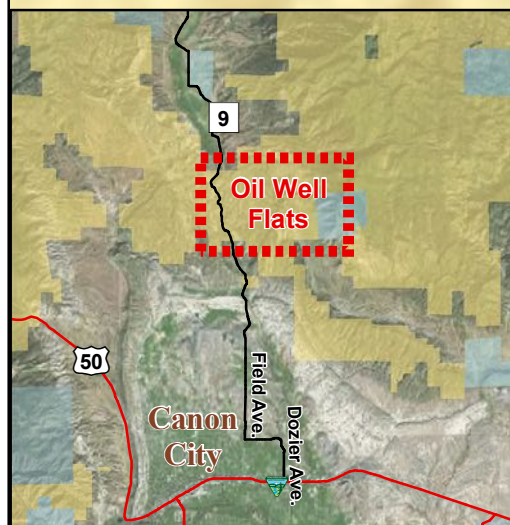
Unconformity
.3 mi.

Fire Canyon
1 mi.

Island in the Sky

Island in the Sky
2.8 mi.

This area is CLOSED to motorized travel during wet conditions.
Call (719) 269-8500 for current road information.



To Canon City

Legend

Recreation Sites	Designated Routes	Land Ownership
Wet Weather Gate	Primitive Roads	Bureau of Land Management
Picnic Area	Bicycle, Foot and Horse Trails	Private
Trailhead	Horse and Foot Trails	State
Trailer Parking	Foot	
Information Kiosk	Non Designated Routes	
Interpretive Site		
Fremont County Roads		

For more information, contact:
The Bureau of Land Management
Royal Gorge Field Office
3028 E Main St.
Canon City, CO 81212
(719) 269-8500
<http://www.blm.gov/co/st/en/fo/rgfo.html>

0 0.075 0.15 0.3 Miles